

# WELCOME

Abbey Lake is a beautiful apartment home community that offers great amenities and atmosphere to our residents. Tree-shaded and pet-friendly retreat in Thomasville Georgia, with comfortable 1,2, and 3 bedroom floor plans. Abbey Lake is just minutes from the conveniences of the city. For outdoor fun, cool off in our two swimming pools or fish in the lake out front. Call today to schedule your personal tour.

## AMENITIES

- Five Distinctive Floor Plans
- Two Private Swimming Pools
- One, Two, and Three Bedroom Apartment Homes
- Patios & Balconies
- Laundry Facilities
- Washer and Dryer Connections
- Free Garbage Collection
- Monthly Pest Control
- Front Door Parking
- Convenient Location
- Pet-Friendly
- 24-Hour Emergency Maintenance Service



2005 EAST PINE TREE BLVD.  
THOMASVILLE, GA 31792  
229-226-1577 FAX 229-558-9619  
[abbylake@rose.net](mailto:abbylake@rose.net)



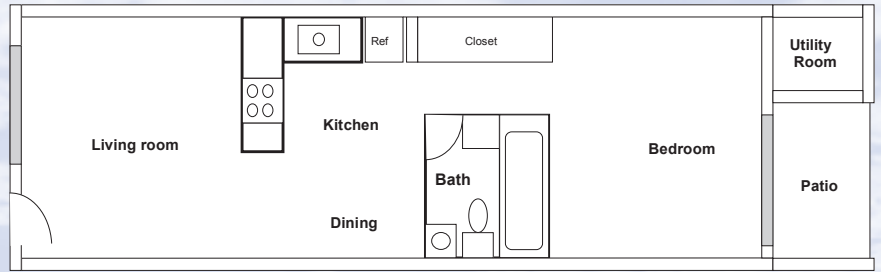
# FLOORPLANS



One Bedroom  
One Bath  
575 sq.ft.

Rent \_\_\_\_\_

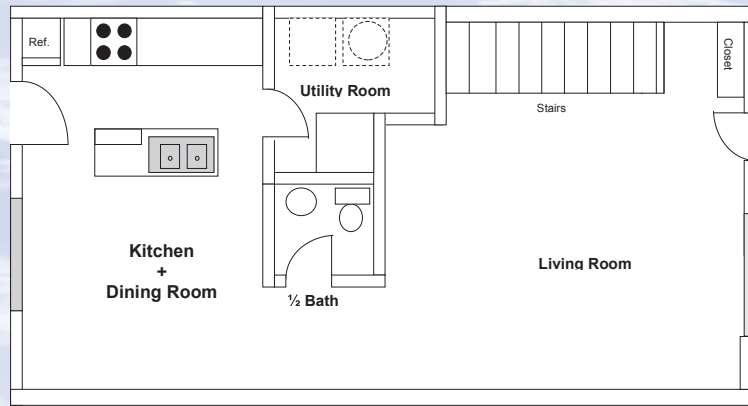
Deposit \_\_\_\_\_



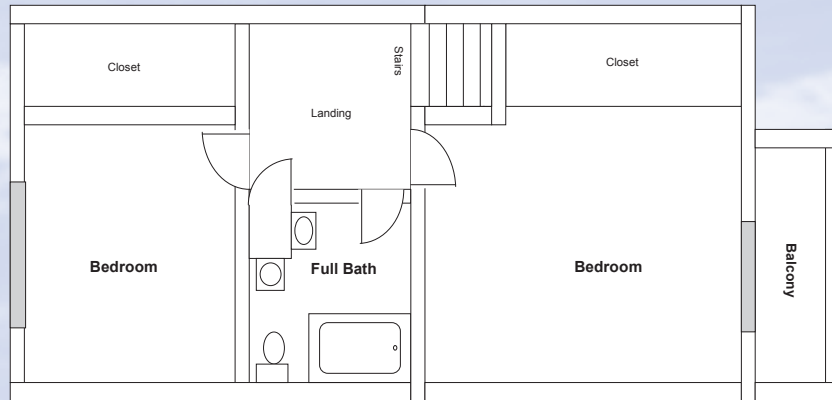
Two Bedroom  
One & One Half Bath  
Townhome  
1100 sq.ft.

Rent \_\_\_\_\_

Deposit \_\_\_\_\_



First Floor



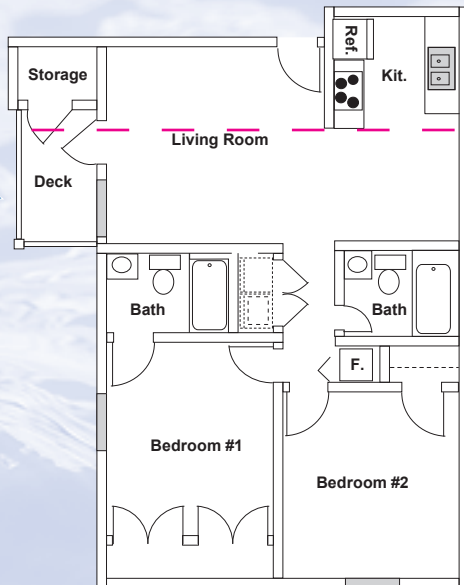
Second Floor



Two Bedroom  
Two Bath  
with Deck  
940 sq.ft.

Rent \_\_\_\_\_

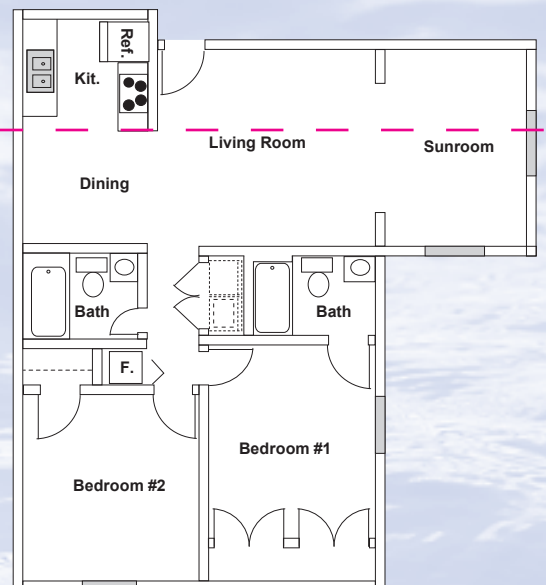
Deposit \_\_\_\_\_



Deluxe  
Two Bedroom  
Two Bath  
with Sunroom  
1070 sq.ft.

Rent \_\_\_\_\_

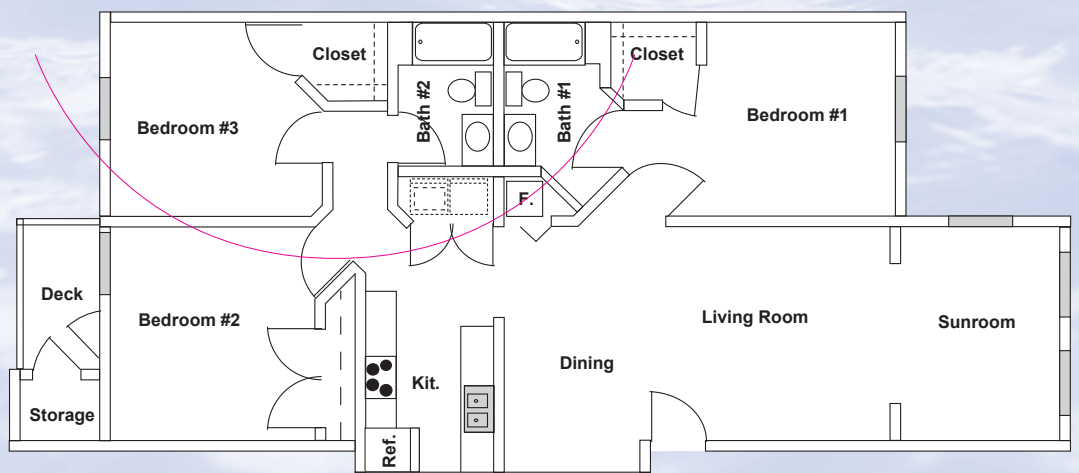
Deposit \_\_\_\_\_



Three Bedroom  
Two Bath  
with Sunroom  
1500 sq.ft.

Rent \_\_\_\_\_

Deposit \_\_\_\_\_



\* All square footages are approximate.